

HAMMER UNIONS

FIGURE 50

- Recommended for air, water, oil or gas service to 500 PSI
- Available in threaded
- Available in bronze, based on application



FIGURE 100

- Cold working pressure - 1,000 PSI
- Low pressure union
- Manifold & general service



FIGURE 200

- Cold working pressure - 2,000 PSI
- General purpose union
- Available in threaded & butt-weld

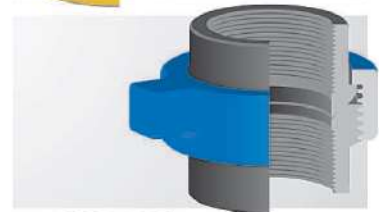


FIGURE 206

- Cold working pressure - 2,000 PSI
- O-Ring in metal sub sealing extends life
- Cup and cone provide "zero clearance against extrusion"
- Available in threaded & butt-weld
- All sizes available in sour service
- Available socketweld unions in 2", 3", 4", & 6"



FIGURE 207

- Cold working pressure - 2,000 PSI
- Manifold and blanking the end of line - 'O' ring cap provides leak-free seal
- Connection cap can be tapped for pressure gauge or valve
- Available in threaded & butt-weld

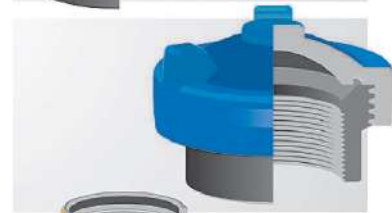
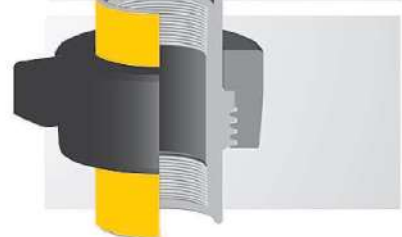


FIGURE 300

- Cold working pressure - 2,000 PSI or 6,000 PSI
- 'Flat Face' design facilitates straight breakout of connected components such as valve or fittings for repair or inspection
- Moderate vacuum service insulated unions available



HAMMER UNIONS

FIGURE 400

- 2" to 4" sizes CWP is 4,000 PSI
- 6" to 12" sizes CWP is 2,500 PSI
- Mainly used for manifold pumping and mud pumping

FIGURE 602

- Cold working pressure - 6,000 PSI
- Lip type elastomer seal protects metal-to-metal designed to reduce turbulence in the line
- Usage mainly in manifold and mud services
- Available with non-pressure thread sealing ends

FIGURE 1002

- Cold working pressure -10,000 PSI
- Field replaceable lip type elastomer seal protects secondary metal-to-metal seal
- 5" and 6" butt-weld are 7,500 PSI for standard service
- 5" and 6" butt-weld are 5,000 PSI for sour service

FIGURE 1003

- Cold working pressure -10,000 PSI
- Misaligning unions are used in high pressure applications where the lines are not aligned
- 5" is 7,500 PSI for standard service
- 5" is 5,000 PSI for sour service

FIGURE 1004

- Cold working pressure -10,000 PSI
- Field replaceable lip type elastomer seal protects secondary metal-to-metal seal
- Available in forged steel for butt-weld connections
- Schedule XXH

FIGURE 1502

- Cold working pressure -15,000 PSI
- Field replaceable lip type elastomer seal protects secondary metal-to-metal seal
- Used mainly in choke | kill lines, cementing, fracturing | testing
- Available in threaded, welded, butt-weld and non-pressure thread sealing ends

FIGURE 2202

- Cold working pressure -15,000 PSI
- Field replaceable lip type elastomer seal protects secondary metal-to-metal seal
- Used in sour gas services
- Meets Nace MR-01-75 standards
- Butt-weld Schedule XXH only

