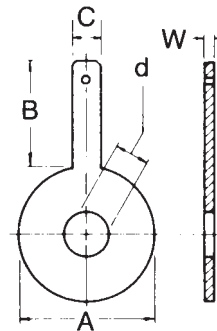


PADDLE TYPE ORIFICE PLATES (SERIES 520)

The Paddle type orifice plate (Series 520) is designed for use between orifice flange unions. The line size, flange rating, orifice bore, and plate material is stamped on the handle.

	125 Lbs. and 150 Lbs. A.N.S.I.	300 Lbs. A.N.S.I.	400 Lbs. A.N.S.I.	600 Lbs. A.N.S.I.	900 Lbs. A.N.S.I.	1500 Lbs. A.N.S.I.	2500 Lbs. A.N.S.I.	For All Pressure Ratings 125-1500 Lbs. A.N.S.I.		
SIZE	A	A	A	A	A	A	A	B	C	W
1/2"	1 7/8"	2 1/8"	2 1/8"	2 1/8"	2 1/2"	2 1/2"		3"	1"	1/8"
3/4"	2 1/4"	2 5/8"	2 5/8"	2 5/8"	2 3/4"	2 3/4"		3"	1"	1/8"
1"	2 5/8"	2 7/8"	2 7/8"	2 7/8"	3 1/8"	3 1/8"		4"	1"	1/8"
1 1/4"	3"	3 1/4"	3 1/4"	3 1/4"	3 1/2"	3 1/2"		4"	1"	1/8"
1 1/2"	3 3/8"	3 3/4"	3 3/4"	3 3/4"	3 7/8"	3 7/8"	4 5/8"	4"	1"	1/8"
2"	4 1/8"	4 3/8"	4 3/8"	4 3/8"	5 5/8"	5 5/8"	5 3/4"	4"	1"	1/8"
2 1/2"	4 7/8"	5 1/8"	5 1/8"	5 1/8"	6 1/2"	6 1/2"	6 5/8"	4"	1"	1/8"
3"	5 3/8"	5 7/8"	5 7/8"	5 7/8"	6 5/8"	6 7/8"	7 3/4"	4"	1"	1/8"
4"	6 7/8"	7 1/8"	7"	7 5/8"	8 1/8"	8 1/4"	9 1/4"	4"	1"	1/8"
5"	7 3/4"	8 1/2"	8 3/8"	9 1/2"	9 3/4"	10"	11"	5"	1 1/2"	1/8"
6"	8 3/4"	9 7/8"	9 3/4"	10 1/2"	11 3/8"	11 1/8"	12 1/2"	5"	1 1/2"	1/8"
8"	11"	12 1/8"	12"	12 5/8"	14 1/8"	13 7/8"	15 1/4"	5"	1 1/2"	1/8"
10"	13 3/8"	14 1/4"	14 1/8"	15 3/4"	17 1/8"	17 1/8"	18 3/4"	5"	1 1/2"	1/4"
12"	16 1/8"	16 5/8"	16 1/2"	18"	19 5/8"	20 1/2"	21 5/8"	5"	1 1/2"	1/4"
14"	17 3/4"	19 1/8"	19"	19 3/8"	20 1/2"	22 3/4"	5"	1 1/2"	1/4"
16"	20 1/4"	21 1/4"	21 1/8"	22 1/4"	22 5/8"	25 1/4"	6"	1 1/2"	1/4"
18"	21 1/2"	23 3/8"	23 1/4"	24"	25"	27 5/8"	6"	1 1/2"	1/4"
20"	23 3/4"	25 5/8"	25 3/8"	26 3/4"	27 3/8"	29 5/8"	6"	1 1/2"	3/8"
22"	26"	27 3/4"	27 1/2"	28 7/8"	6"	1 1/2"	3/8"
24"	28 1/8"	30 3/8"	30 1/8"	31"	32 7/8"	35 1/2"	6"	1 1/2"	3/8"

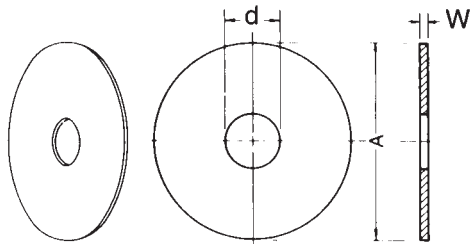
- When ordering please specify:
1. Size, Flange series
 2. Material
 3. Required bore size
 4. Plate Thickness



Diameters of holes in Paddle Plate Handles

Plate Size	Hole Diameter
1/2" thru 2"	1/4"
2 1/2" thru 12"	3/8"
14" thru 24"	1/2"
26" and larger	3/4"

ORIFICE PLATES (SERIES 500)



The Universal Series 500 Orifice Plate fits all orifice fittings and is interchangeable with other universal type plates.

MATERIALS:

Available in 304 and 316 Stainless Steel, Monel or Hastelloy "B" or "C" are available upon special request. All materials meet AGA or ASME specifications, and recommendations for inspection, manufacturing tolerance and finish. Bored to specification, or furnished blank if requested.

SIZE	A	W	WEIGHT
1	1.312	1/8	.05
1 1/2	2.000	1/8	.11
2	2.437	1/8	.17
2 1/2	2.844	1/8	.26
3	3.347	1/8	.34
4	4.406	1/8	.55
5	6.000	1/8	.95
6	6.437	1/8	1.18
8	8.437	1/8	2.03
10	10.687	1/4	3.25
12	12.593	1/4	4.51
14	13.750	1/4	5.58
16	16.000	1/4	7.29
18	17.9375	1/4	18.45
20	20.000	3/8	22.78
24	24.250	3/8	32.80
26	26.000	3/8	38.50
30	30.000	1/2	51.25

d-BORE TO BE SPECIFIED