

# HAMMER UNIONS

- Hammer unions range in size: 1" to 12"
- Maximum working pressure of 15,000 PSI
- Complete traceability
- Manufactured from forged steel
- ASTM A-105 for a working pressure less than 6000 PSI
- AISI 4130 for a working pressure greater than or equal to 6000 PSI
- Available with charpy testing



**INDICATES REDUCED CWP DUE TO PIPE SIZE OR OTHER DESIGN FACTORS:**

**FIGURE 300**

2" THREADED CWP 2000/6000 PSI  
2" BUTT-WELD CWP 6000 PSI

**FIGURE 400 STANDARD SERVICE**

6", 8", 10", & 12" CWP 2500/5000 PSI

**FIGURE 1002 STANDARD SERVICE**

5" THREADED CWP 5000 / 7500 PSI  
5" & 6" BUTT-WELD CWP 7500 / 11250 PSI

**FIGURE 1002 SOUR SERVICE**

5" & 6" BUTT-WELD CWP 5000 / 7500 PSI

**FIGURE 1003 STANDARD SERVICE**

4" & 5" BUTT-WELD CWP 7500 / 11250 PSI

**FIGURE 1003 SOUR SERVICE**

4" & 5" BUTT-WELD CWP 5000 / 7500 PSI

**T** THREADED

**W** BUTT-WELD

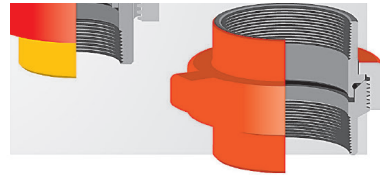
**T/W** THREADED & BUTT-WELD

Figure Number	Assembly Key	Pressure Rating (PSI)				Nominal Pipe Size													
		Standard Service		Sour Service		(IN)	1	1 ¼	1 ½	2	2 ½	3	4	5	6	8	10	12	
		Cold Working	Test	Cold Working	Test	(MM)	25	32	40	50	65	80	100	100	125	150	250	300	
40		400	600	400	600					T									
50		500	750	500	750									T					
100		1000	1500	1000	1500				T/W	T	T/W	T/W	T/W	T/W	T/W	T/W			
200		2000	3000	2000	3000		T	T	T/W	T/W	T	T/W	T/W	T/W	T/W	T/W	T/W		
201		2000	3000	2000	3000				T										
206		2000	3000	2000	3000		T	T	T/W	T/W	T	T/W	T/W	T/W	T/W	T/W	T/W		
207		2000	3000	2000	3000							T/W	T/W		T/W				
211		2000	3000	2000	3000				T					600					
300		2000	3000	N/A	N/A				•										
301		3000	3000	N/A	N/A				T										
400		4000	6000	4000	6000				T		T	T/W		•	•	•	•		
600		6000	9000	N/A	N/A				T										
602		6000	9000	6000	9000		T/W		T/W	T/W		T/W	T/W						
1002		10000	15000	7500	11250		T		T/W		T/W	T/W	•	•					
1003		10000	15000	7500	11250						W	•	•						
1004		10000	15000	7500	11250										W				
1502		15000	25000	10000	15000		T		T	T/W	T	T/W	T/W	W	W				
2202		N/A	N/A	15000	22500				W		W								
AG		6000	9000	6000	9000				T										

## HAMMER UNIONS

### FIGURE 50

- Recommended for air, water, oil or gas service to 500 PSI
- Available in threaded
- Available in bronze, based on application



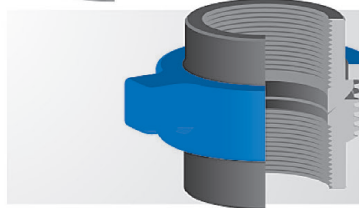
### FIGURE 100

- Cold working pressure - 1,000 PSI
- Low pressure union
- Manifold & general service



### FIGURE 200

- Cold working pressure - 2,000 PSI
- General purpose union
- Available in threaded & butt-weld



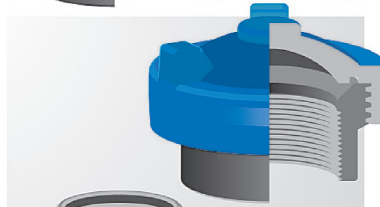
### FIGURE 206

- Cold working pressure - 2,000 PSI
- O-Ring in metal sub sealing extends life
- Cup and cone provide "zero clearance against extrusion"
- Available in threaded & butt-weld
- All sizes available in sour service
- Available socket weld unions in 2", 3", 4" & 6"



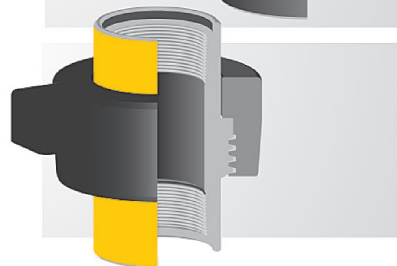
### FIGURE 207

- Cold working pressure - 2,000 PSI
- Manifold and blanking the end of line - 'O' ring cap provides leak-free seal
- Connection cap can be tapped for pressure gauge or valve
- Available in threaded & butt-weld



### FIGURE 300

- Cold working pressure - 2,000 PSI or 6000 PSI
- 'Flat Face' design facilitates straight breakout of connected components such as valve or fittings for repair or inspection
- Moderate vacuum service insular ted unions available



## HAMMER UNIONS

### FIGURE 400

- 2" to 4" sizes CWP is 4,000PSI
- 6" to 12" sizes CWP is 2,500PSI
- Mainly used for manifold pumping and mud pumping

### FIGURE 602

- Cold working pressure - 6,000 PSI
- Lip type elastomer seal protects metal-to-metal designed to reduce turbulence in the line
- Usage mainly in manifold and mud services
- Available with non-pressure thread sealing ends

### FIGURE 1002

- Cold working pressure -10,000 PSI
- Field replaceable lip type elastomer seal protects secondary metal-to-metal seal
- 5" and 6" butt-weld are 7,500 PSI for standard service
- 5" and 6" butt-weld are 5,000 PSI for sour service

### FIGURE 1003

- Cold working pressure -10,000 PSI
- Misaligning unions are used in high pressure applications where the lines are not aligned
- 5" is 7,500 PSI for standard service
- 5" is 5,000 PSI for sour service

### FIGURE 1004

- Cold working pressure -10,000 PSI
- Field replaceable lip type elastomer seal protects secondary metal-to-metal seal
- Available in forged steel for butt weld connections
- Schedule XXH

### FIGURE 1502

- Cold working pressure -15,000 PSI
- Field replaceable lip type elastomer seal protects secondary metal-to-metal seal
- Used mainly in choke I kill lines, cementing, fracturing I testing
- Available in threaded, welded,butt weld and non-pressure thread sealing ends

### FIGURE 2202

- Cold working pressure -15,000 PSI
- Field replaceable lip type elastomer seal protects secondary metal-to-metal seal
- Used in sour gas services
- Meets Nace MR-01-75 standards
- Butt-weld Schedule XXH only

